

# JD Edwards Roadmap

**Apply, Adopt and Accelerate  
your Digital Transformation**

**September 30, 2025**

**Mark Herwege & Bart Vanden Abeele**

Master Principal Solution Engineers

Apps Unlimited JDE WE



# **JD Edwards Roadmap:** **Leading you to the** **future!** **20**

**A rolling 10-year window  
of Premier Support for  
EnterpriseOne 9.2.**

**Extended to *at least* 2036!**





ORACLE

JD Edwards EnterpriseOne 9.2

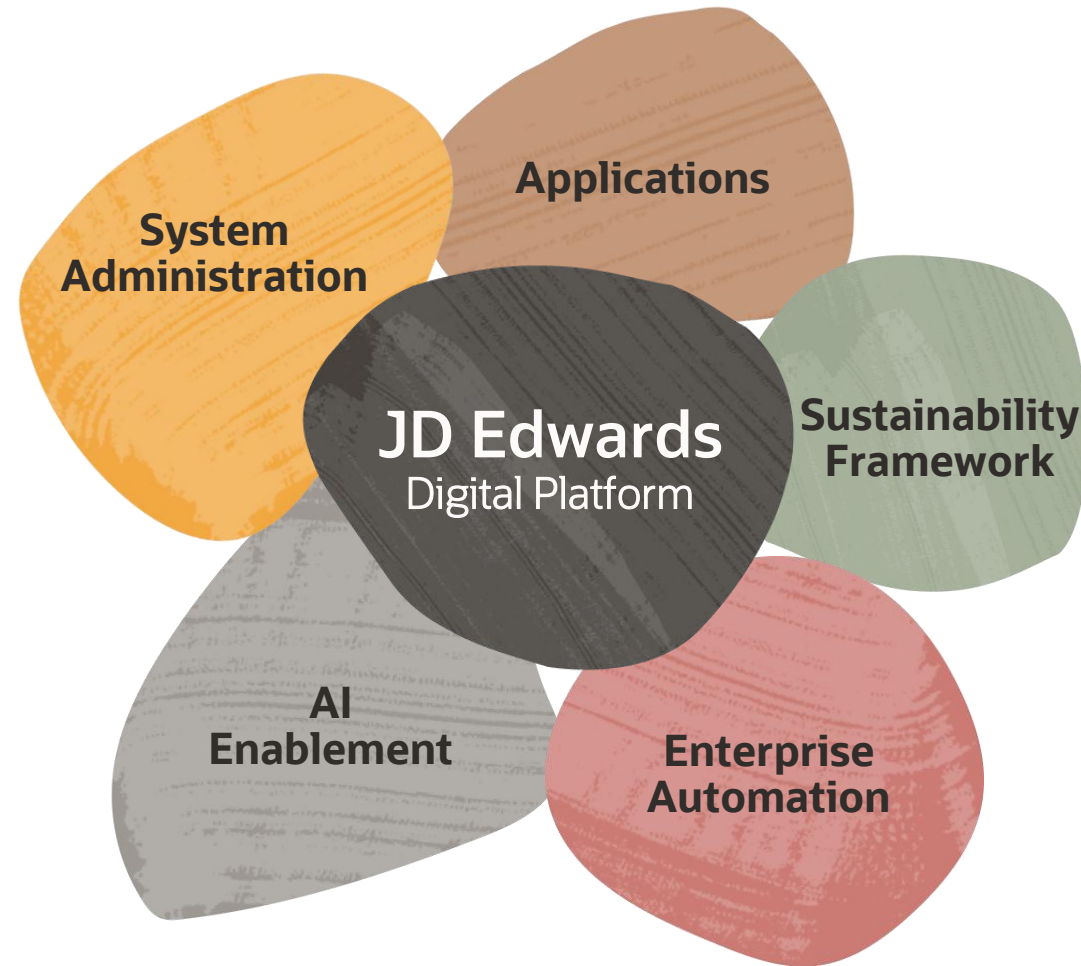
# Release 25

*Automate. Optimize. Transform.*



# JD Edwards Product Strategy

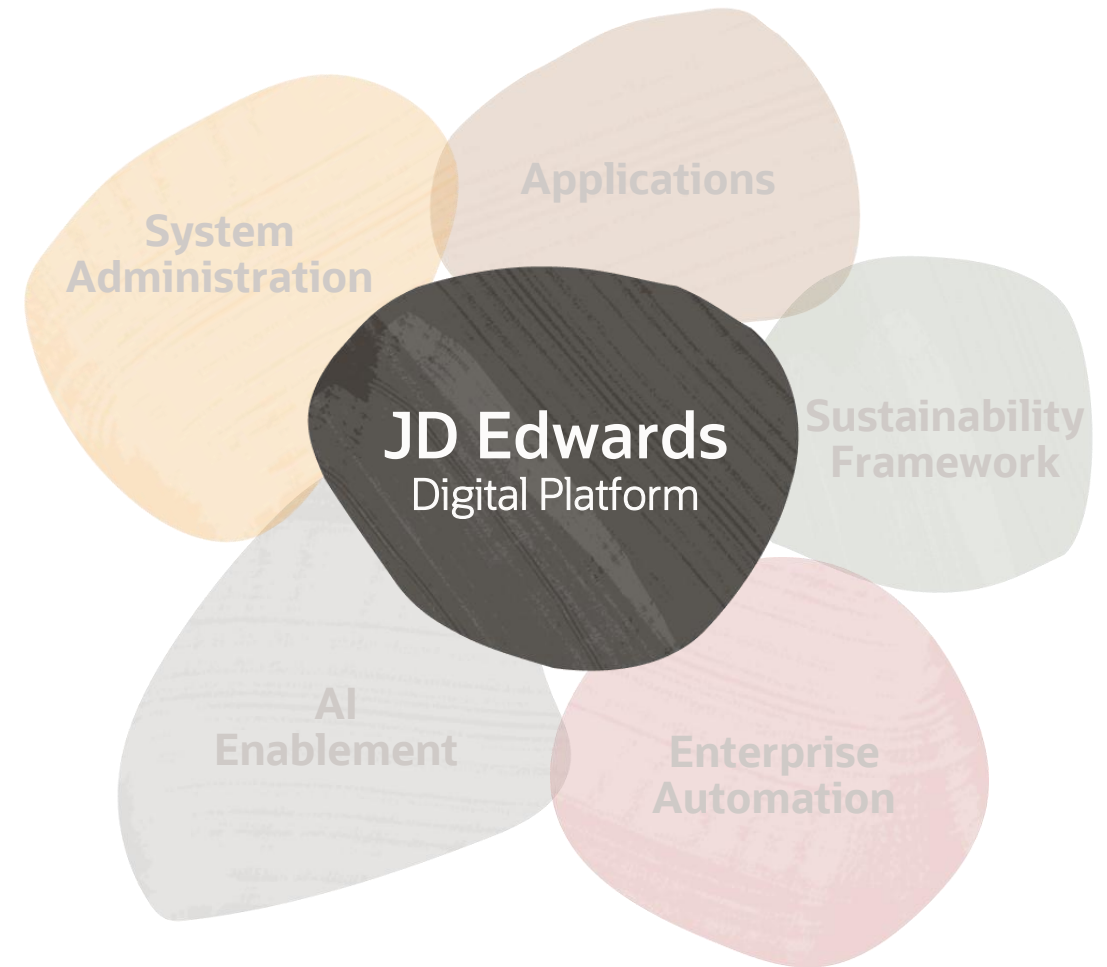
Creating, protecting, and harnessing your digital gold



# JD Edwards Product Strategy

## Digital Platform

- **Process Automation** enablement with Orchestrator, Workflow, and Task Tracking
- **User Experience** enrichment with EnterpriseOne Pages, CafeOne, and Personal Forms
- Enterprise **integration modernization** with Orchestrator, Business Services, and Interoperability
- **No Code/Low Code** Extensibility Frameworks provide rapid, easy solutions without customization

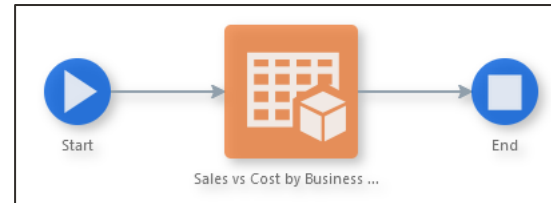


# EnterpriseOne Widgets

Visualize the output of an orchestration as a badge, meter, graph, or text box

- ✓ Ability to create visualizations of EnterpriseOne metrics
- ✓ Ability add Widget as badge
- ✓ Ability choose bar charts to visualize data sets or gauges to keep track of metrics within a range

## Orchestration: Sales vs Cost by Business Unit



```

{
  "Sales vs Cost by Business Unit": [
    {
      "Extended Price [F4211]-Sum": 798,
      "Extended Cost [F4211]-Sum": 0,
      "Business Unit [F4211]": "10",
      "Business Unit [F4211]_desc": "Western Distribution Center"
    },
    {
      "Extended Price [F4211]-Sum": 120540,
      "Extended Cost [F4211]-Sum": 4585.01,
      "Business Unit [F4211]": "20",
      "Business Unit [F4211]_desc": "Northern Distribution Center"
    },
    {
      "Extended Price [F4211]-Sum": -79781438417.2,
      "Extended Cost [F4211]-Sum": -52996798351.39,
      "Business Unit [F4211]": "30",
      "Business Unit [F4211]_desc": "Eastern Distribution Center"
    }
  ]
}
  
```

Orchestration Output

## Configure the Widget in Orchestrator Studio

The configuration interface shows the following settings:

- Widget Type:** Chart (selected)
- Chart Type:** Bar (selected)
- Orientation:** Vertical (selected)
- Stacking:** Unstacked (selected)
- Chart Data:** Sales vs Cost by Business Unit
- Output Table:**

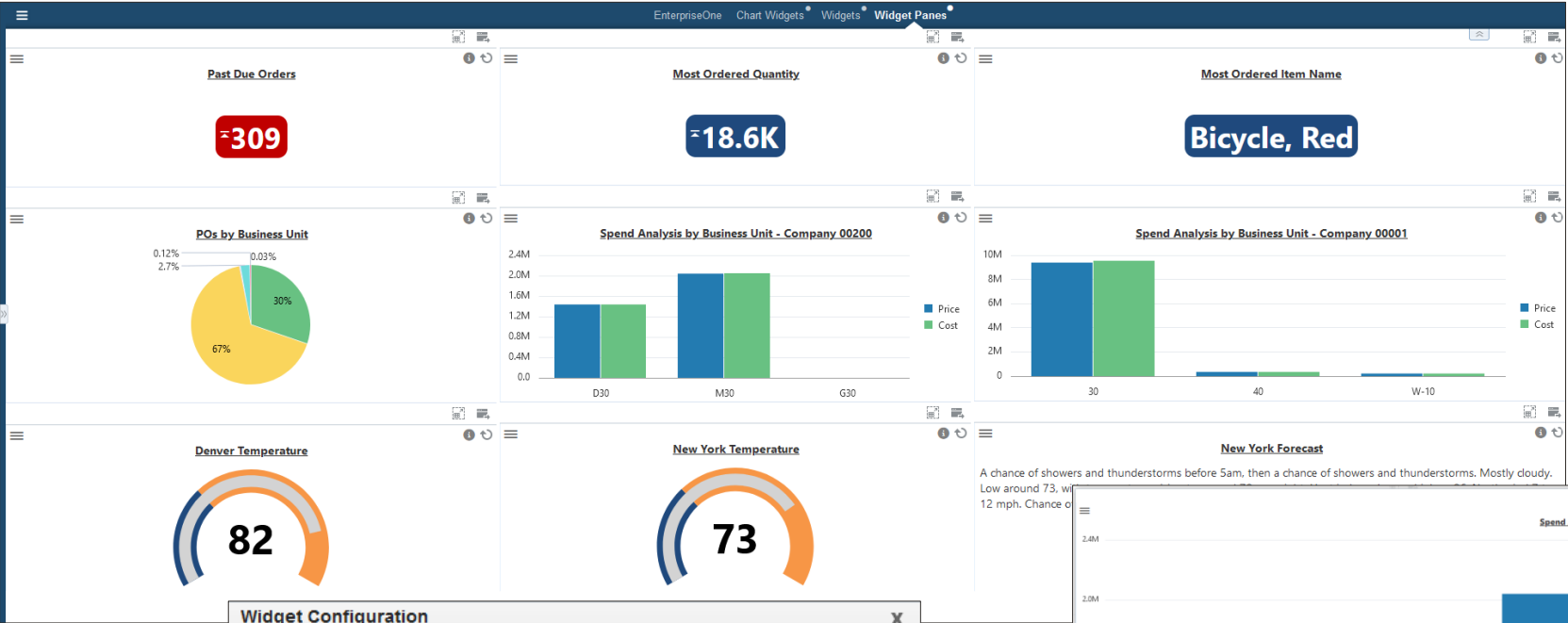
Output	Value	Group	Series Name
Extended Price [F4211]-Sum	[Toggle]	Literal	Sales
Extended Cost [F4211]-Sum	[Toggle]	Literal	Cost
Business Unit [F4211]	[Toggle]	[Toggle]	
Business Unit [F4211]_desc	[Toggle]	[Toggle]	

Publish the Widget  
on an E1 Page



# Widget Pane

New composed page tile type. Better control of tile size and layout



Pop-out to full screen

Widget Configuration X

Title: New York Temperature

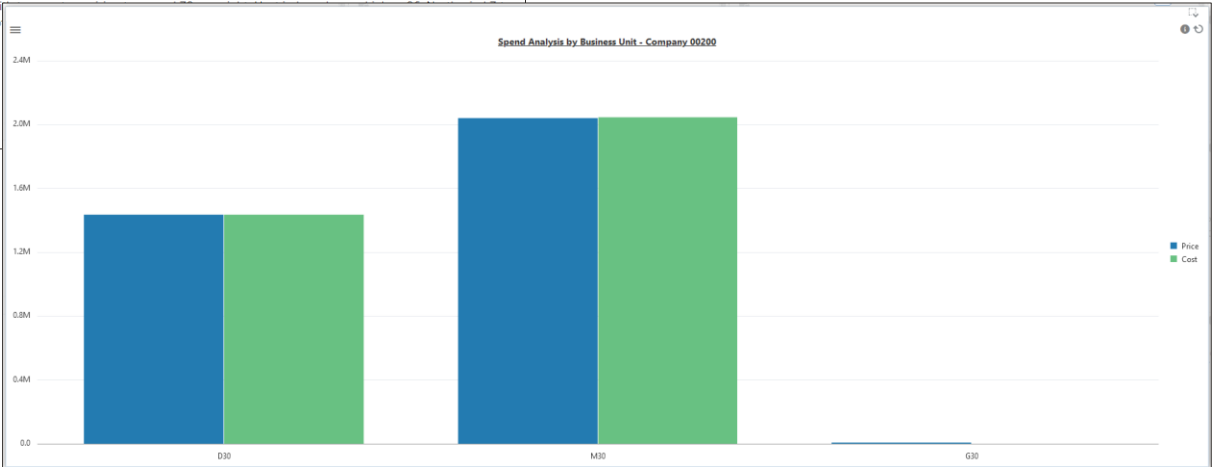
Override Title: ☒

Input	Value
gridpoints (String)	OKX/33,35

Cancel

Save

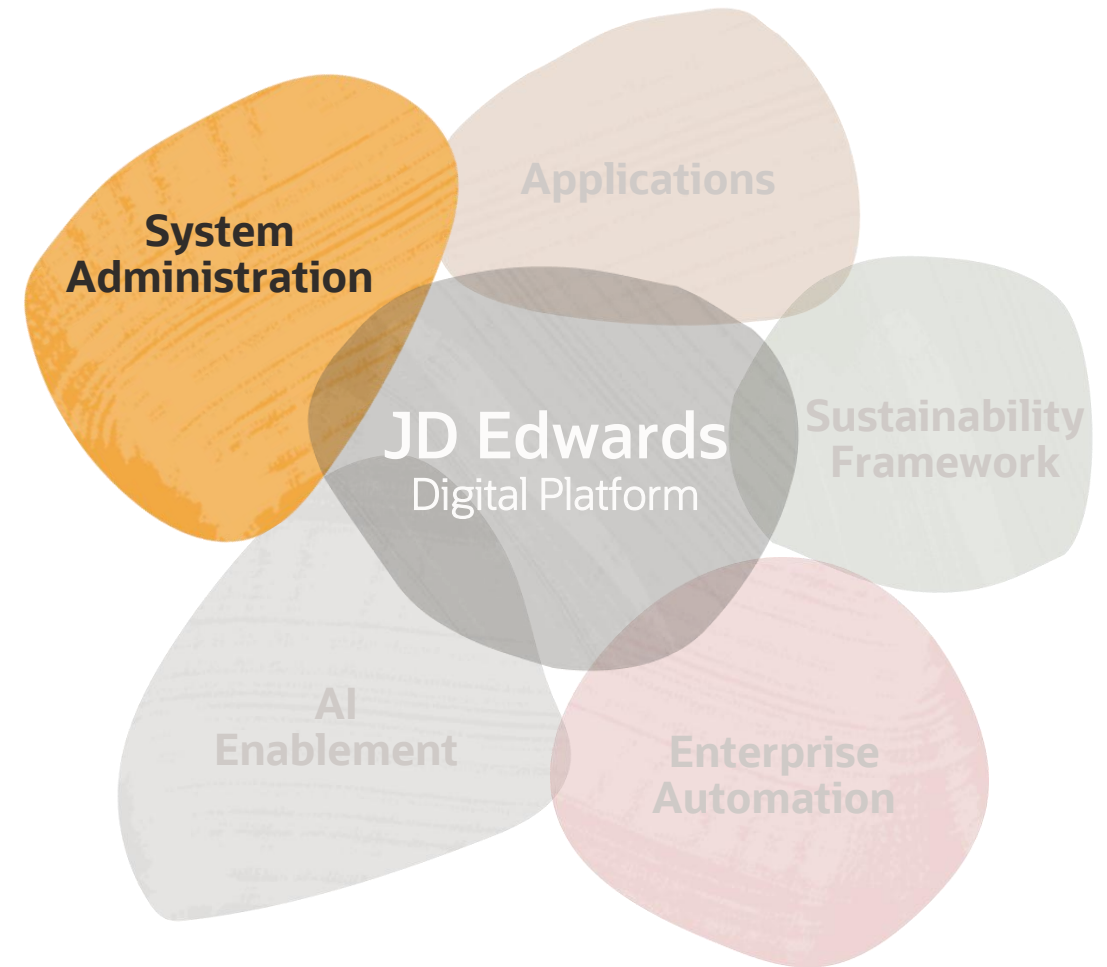
User-provided input



# JD Edwards Product Strategy

## System Administration

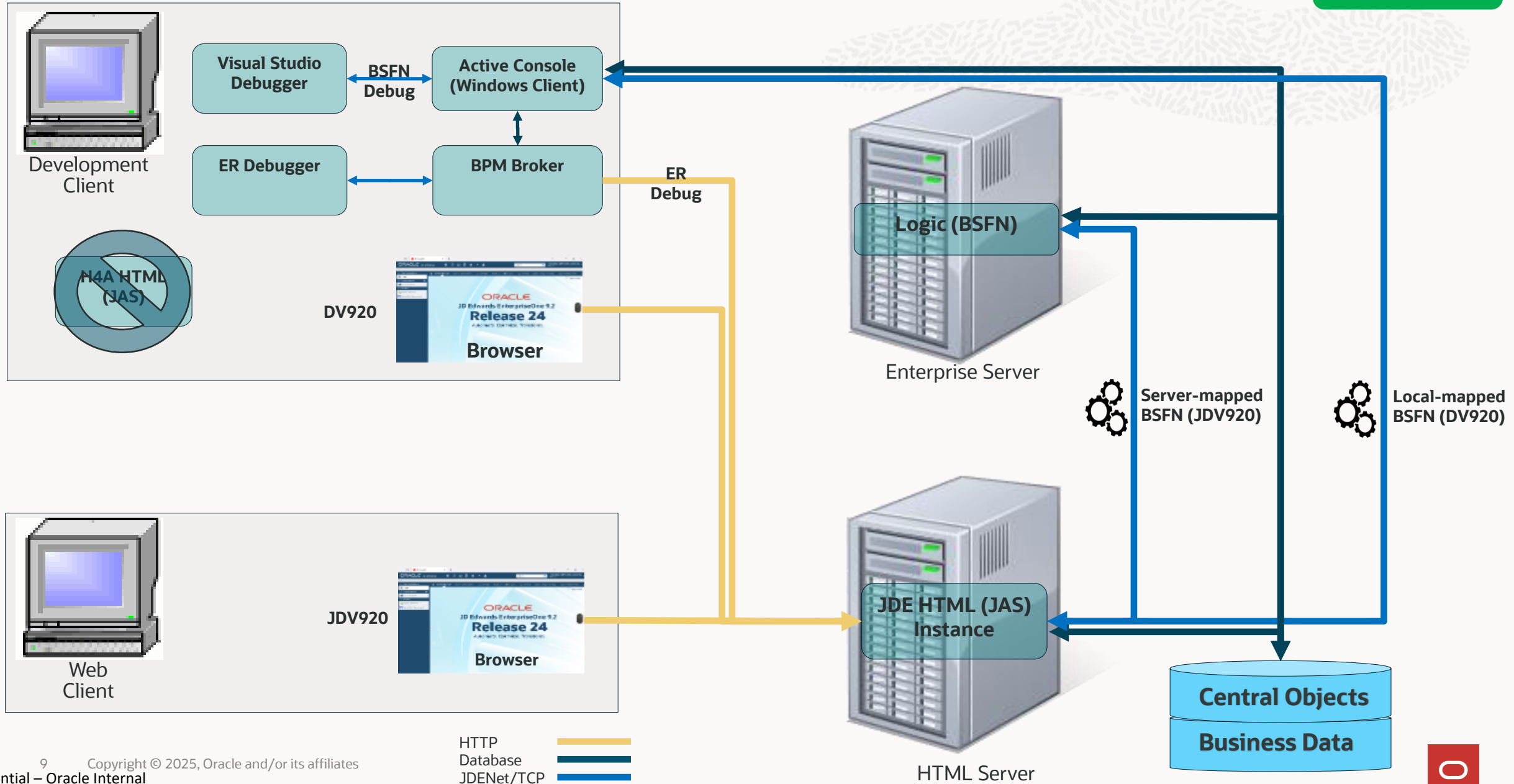
- **Enterprise Class Infrastructure**  
supports choice of platform, on-premises or Cloud with maximum Security to protect your “digital gold”
- **Predictive Patching & Deployment**  
empowering customers to apply product innovation seamlessly
- **Efficient Run & Maintain** options to automate common IT activities delivering high quality of service and low TCO





# Development Client Simplification - Centralized Web Tier

Release 25  
Tools 9.2.9.0



# Optimized Full Package Build

Release 25  
Tools 9.2.9.0

## Business Problem:

Zero Downtime Package Deployment is GREAT but...  
Full Packages Build ~8 Hours

Update Package Deployment Requires Server Lock

## Key Capabilities:

Option to Utilize Existing Active Full Package as Base

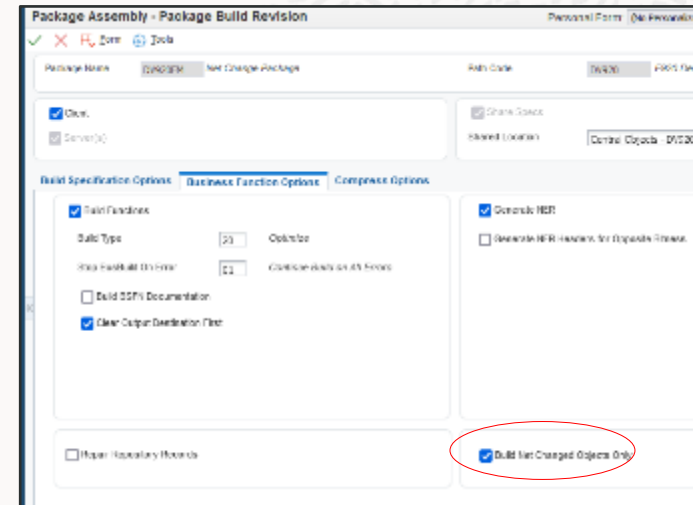
Calculate Net Change/Delta NER Generate & BSFN to  
Compile Since Base Active Package

Simplify File Copy/Extract From Repository

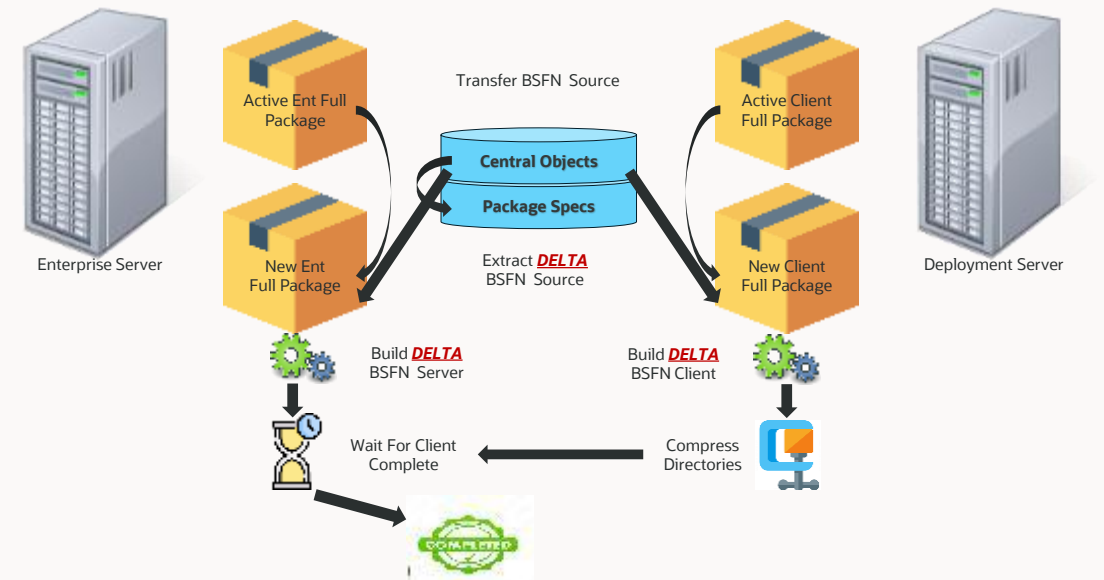
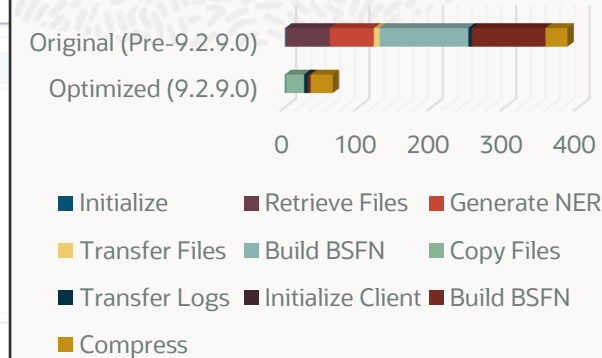
Parallel Process Server & Client Builds

## Value:

- Reduces Build Time of Full Packages By As Much As 85%
- Encourages Full Packages Over Update Packages to Utilize Zero Downtime Package Deployment



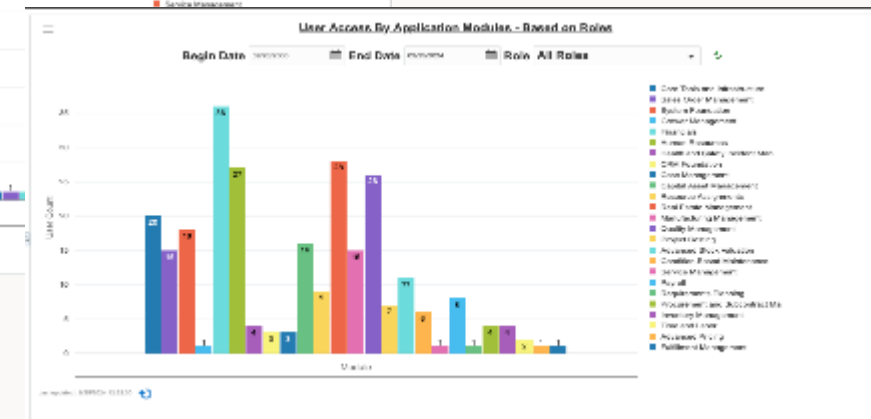
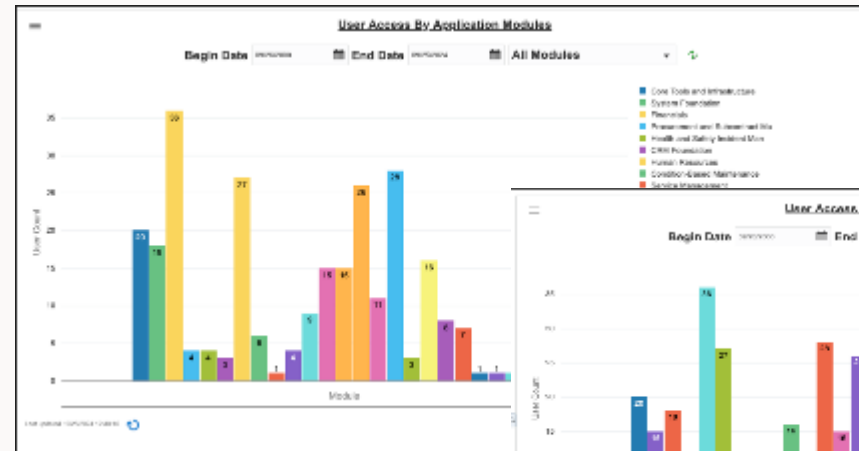
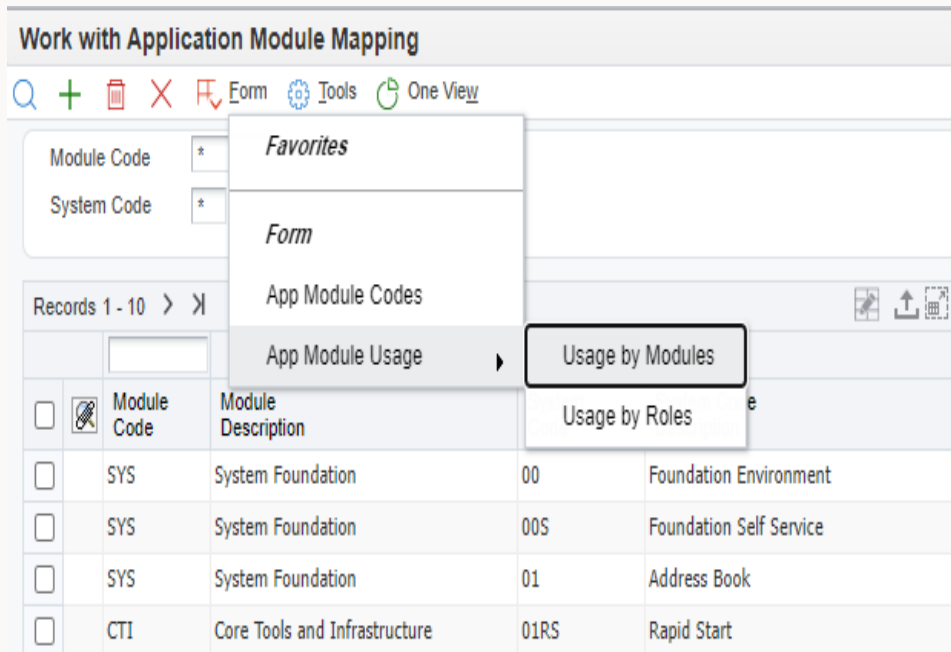
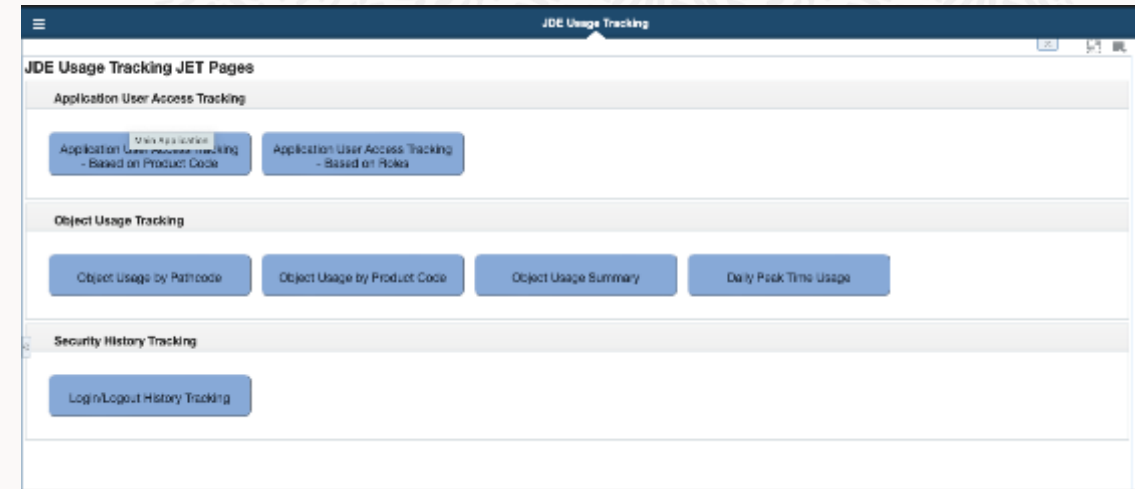
## Full Package Build Times



# Enterprise-Wide Application Usage Tracking

Release 24  
Tools 9.2.8.2

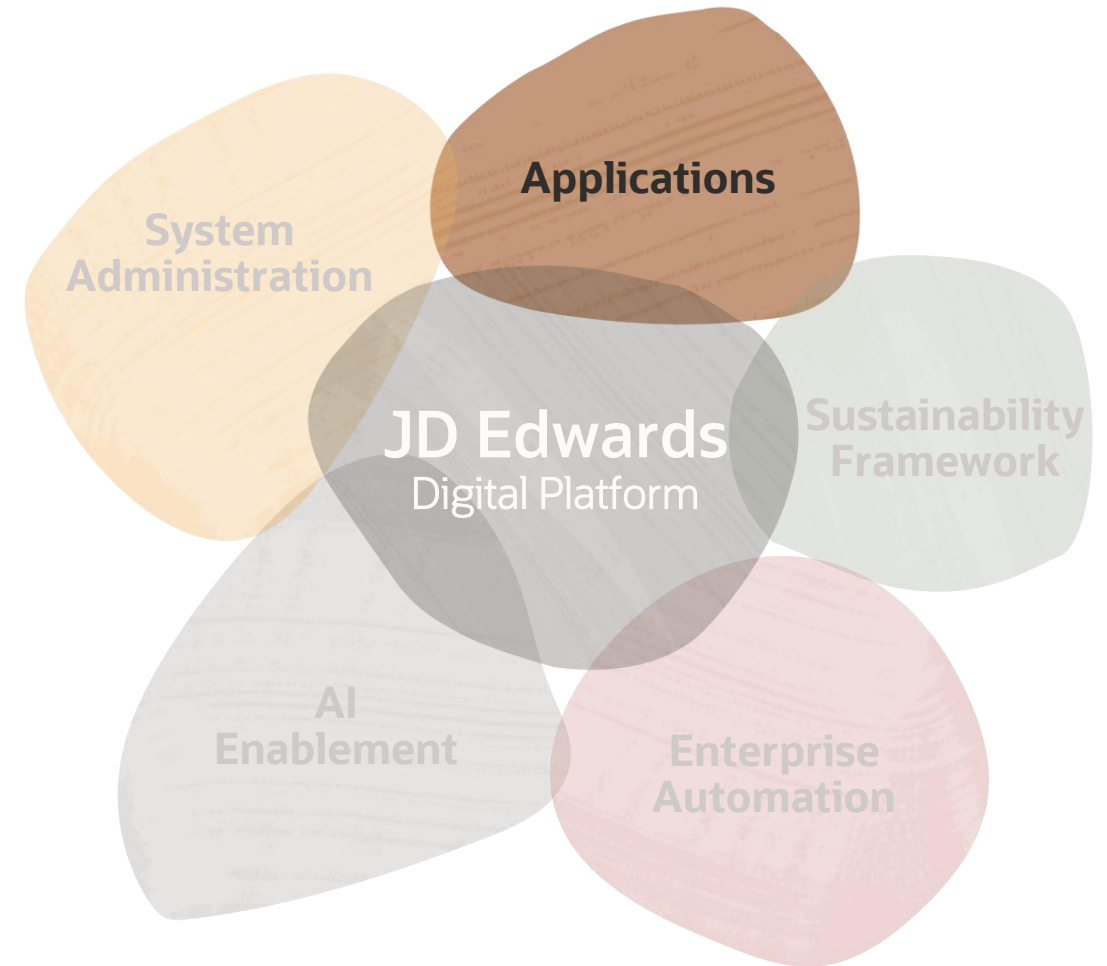
- Assess Usage Across Various Application Modules
- Track & Monitor Application Usage Trends
- Assist License Decision Making for Future Growth
- JET Charts Track User Access:
  - User Access by Application Modules
  - User Access by Application Modules – Based on Roles
- Downloadable Data (as .CSV) for External Analysis



# JD Edwards Product Strategy

## Applications

- **Enhance and Expand** application functionality to address evolving business needs
- **Simplify User Experience** ensuring applications are intuitive and user-friendly, streamlining navigation and boosting productivity
- **Automate Business Processes** to eliminate inefficiencies and reduce bottlenecks



## Two Way Voucher Match Automation

- For non-stock materials and services that do not require a receipt process, accounts payable simply matches the purchase order to the supplier invoice. In this two-way voucher match process, the AP team compares the quantity and amount on the PO to the invoice. This manual process will be automated now.
- Automating the two-way voucher match for non-stock materials and services should significantly reduce the manual workload, expedite invoice payments, and enhance the correctness and timeliness of financial reports.





# Increased Range of Account ID

## Key features

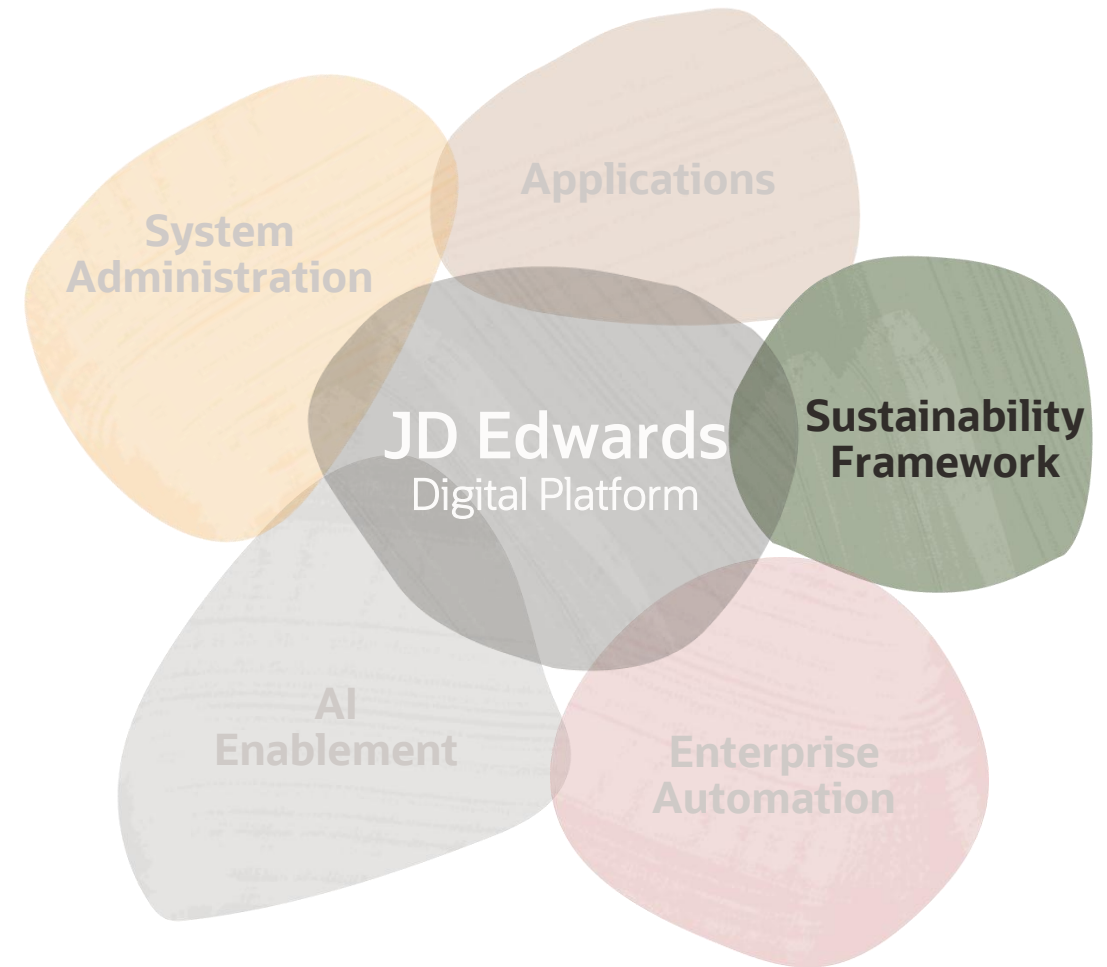
- Increased range of Account ID (AID) being used. The current limit is 99,999,999.
  - Sequential alphanumeric AIDs of length 8 using Alphabets ( A- Z) and Numbers (0-9) are generated once the AID reaches the max, 99,999,999.
- Optional solution; interested customers will have to enable the functionality.
  - Software will generate AID starting from 0 to 99,999,999 (max), as it works today.
- No need for data migration
- Existing data will be respected
- All programs that generate AID will be modified to use the new generator

# JD Edwards Product Strategy

## Sustainability Framework

- **Simplify and streamline** environmental data collection, reducing manual effort and increasing efficiency
- Ensure **accuracy and reliability** of environmental data through validation and management capabilities
- **Flexibility** to integrate with any third-party carbon calculation and reporting tools
- Supports sustainability efforts and helps meet **regulatory requirements**

Driving Sustainability with JD Edwards:  
A Practical Framework 10:30am



# JD Edwards Sustainability Framework

Simplify and Streamline the Environmental Data Collection Process




Various  
Suppliers/Business  
Processes



Different Standard  
and Format



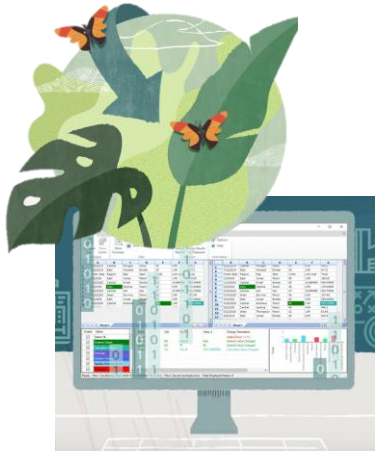
Industrial  
Process



Fuel Usage



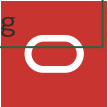
Energy  
Usage



Emission Calculation and  
Reporting

Sustainability Framework

Any 3<sup>rd</sup> party tool or  
Oracle EPM  
Recommending



# JD Edwards Sustainability Framework

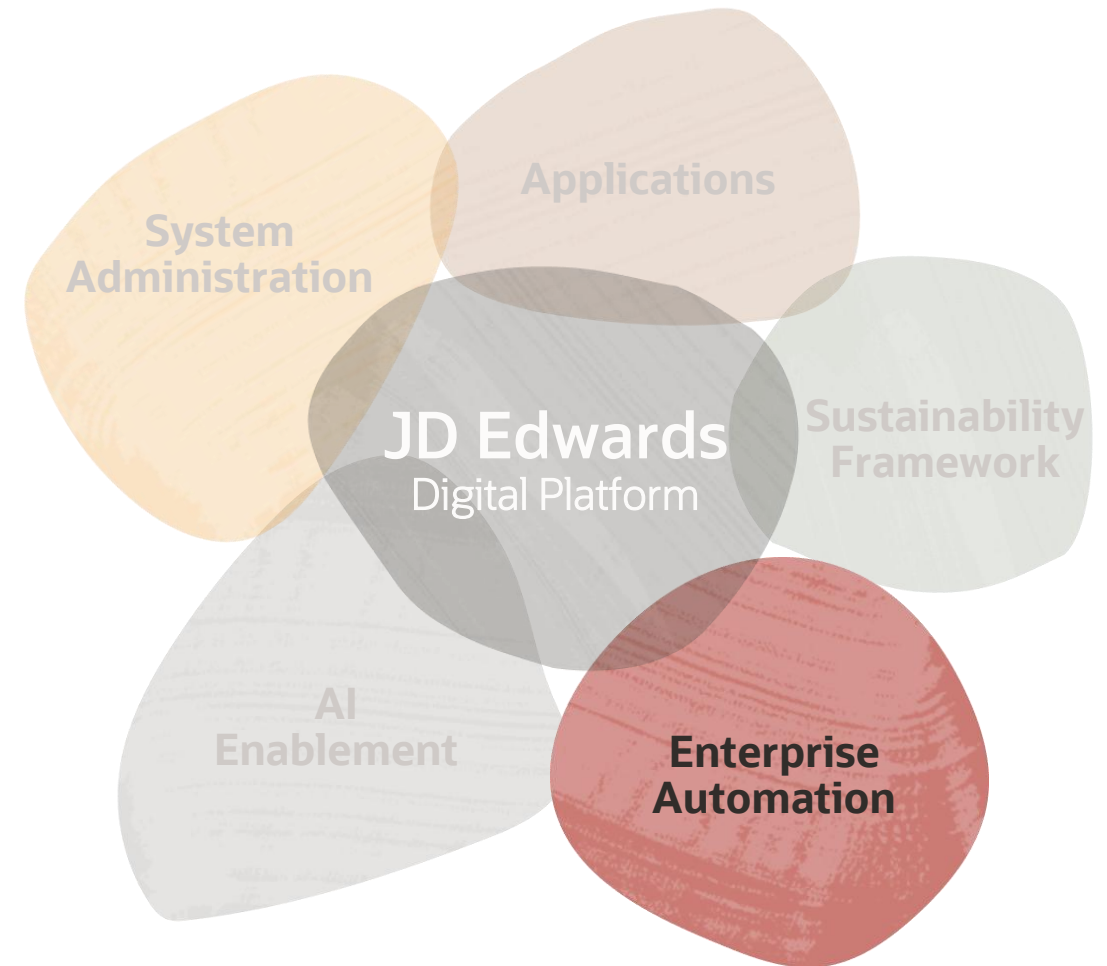


# JD Edwards Product Strategy

## Enterprise Automation

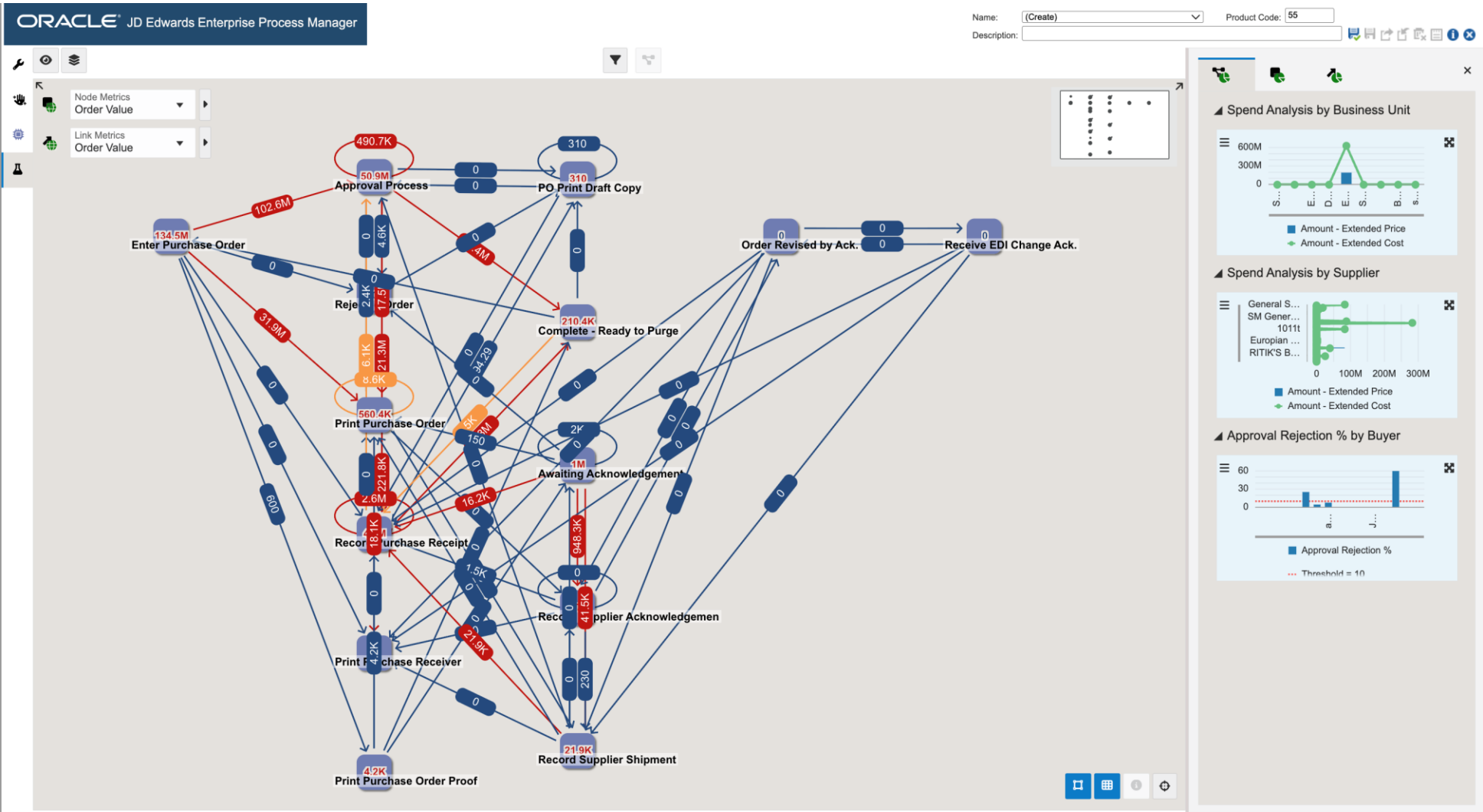
- Evolve from process automation to **Enterprise Automation**
- Get **better insights** from the “digital gold” in your system
- View **metrics and KPIs** in the context of business processes
- Find your “**blind spots**” of inefficiency and opportunity

Enterprise Process Modeler 11:30am

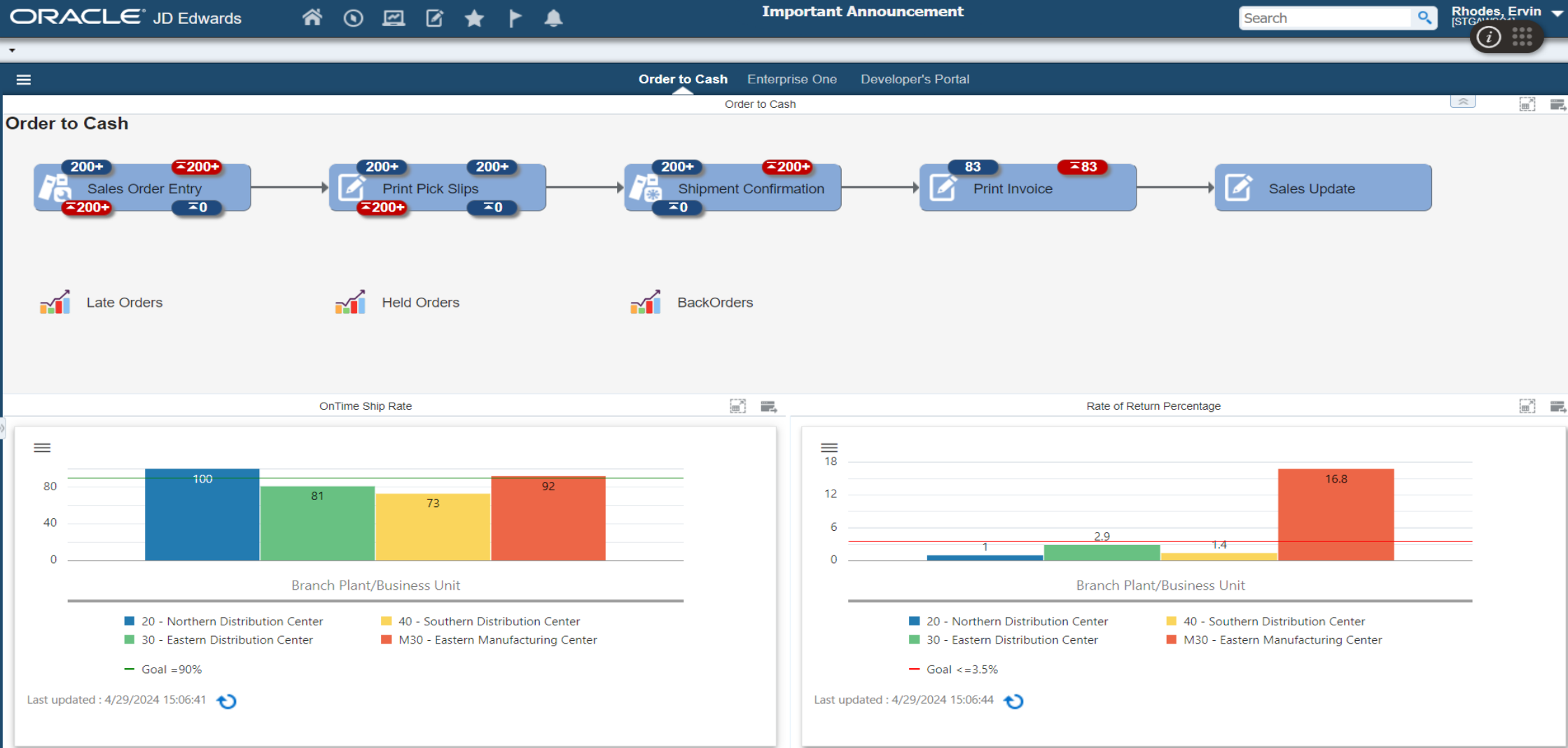




# Enterprise Automation – Procure to Pay – Process Model Template



# Enterprise Automation: Order to Cash

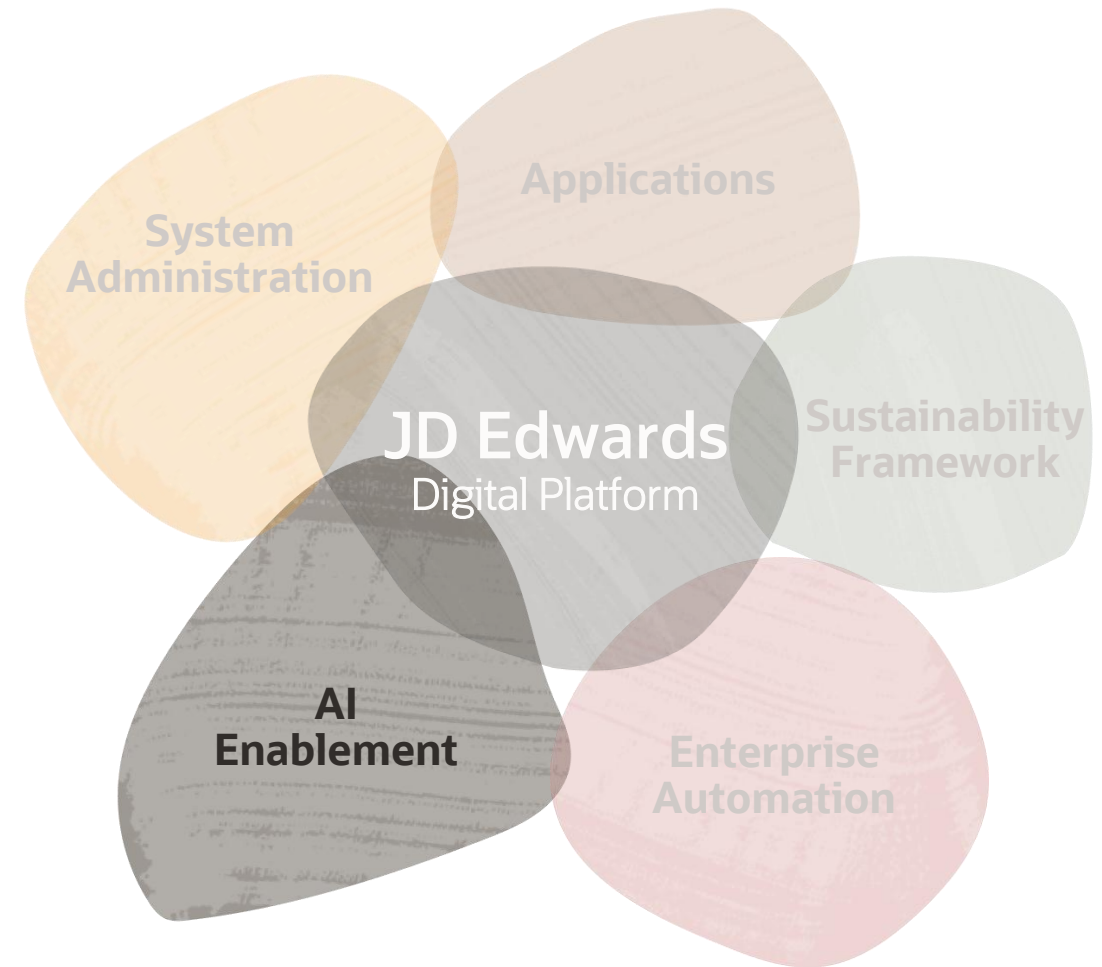


# JD Edwards Product Strategy

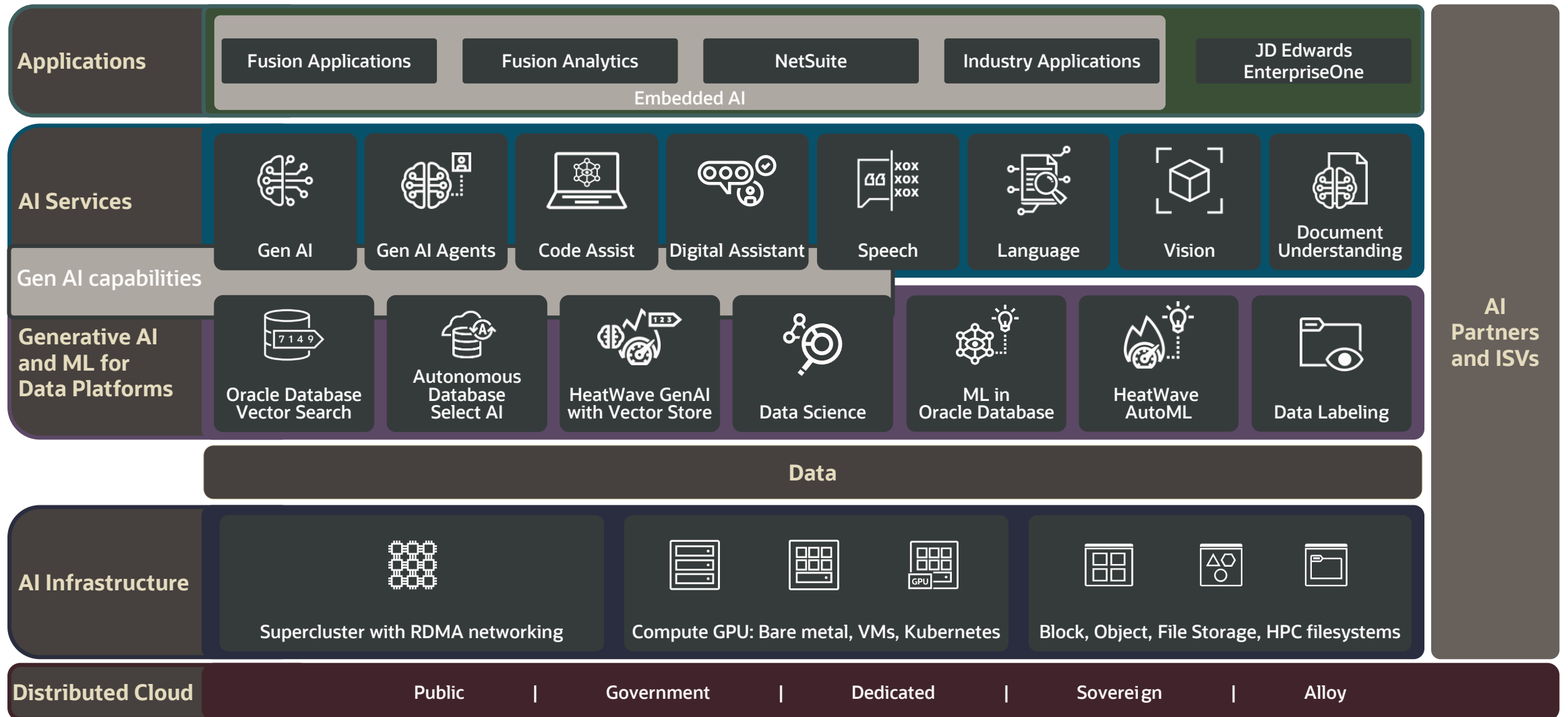
## Oracle AI Enablement

On Tech – Orchestrator 12:30am  
Oracle OCI AI and the JD Edwards  
Orchestrator 2:00pm

- **Enablement** through the JD Edwards Digital Platform
- **Improve decision making** with deeper insights
- **Harness data** in new ways for innovation
- Redefine and reimagine **workflows**
- **Accelerate** business outcomes



# The Oracle AI Stack



# EA Order to Cash with the help of AI





EA Order to Cash



 Late Orders

 Held Orders

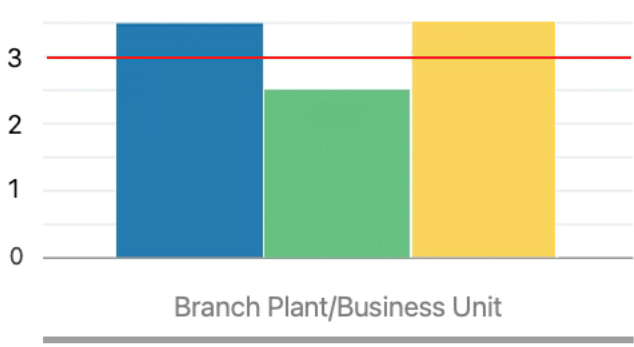
 Back Orders

On Time Ship Rate



Last updated : 9/24/2024 10:35:55 

Rate of Return



Last updated : 9/24/2024 10:35:52 

Order Fill Rate

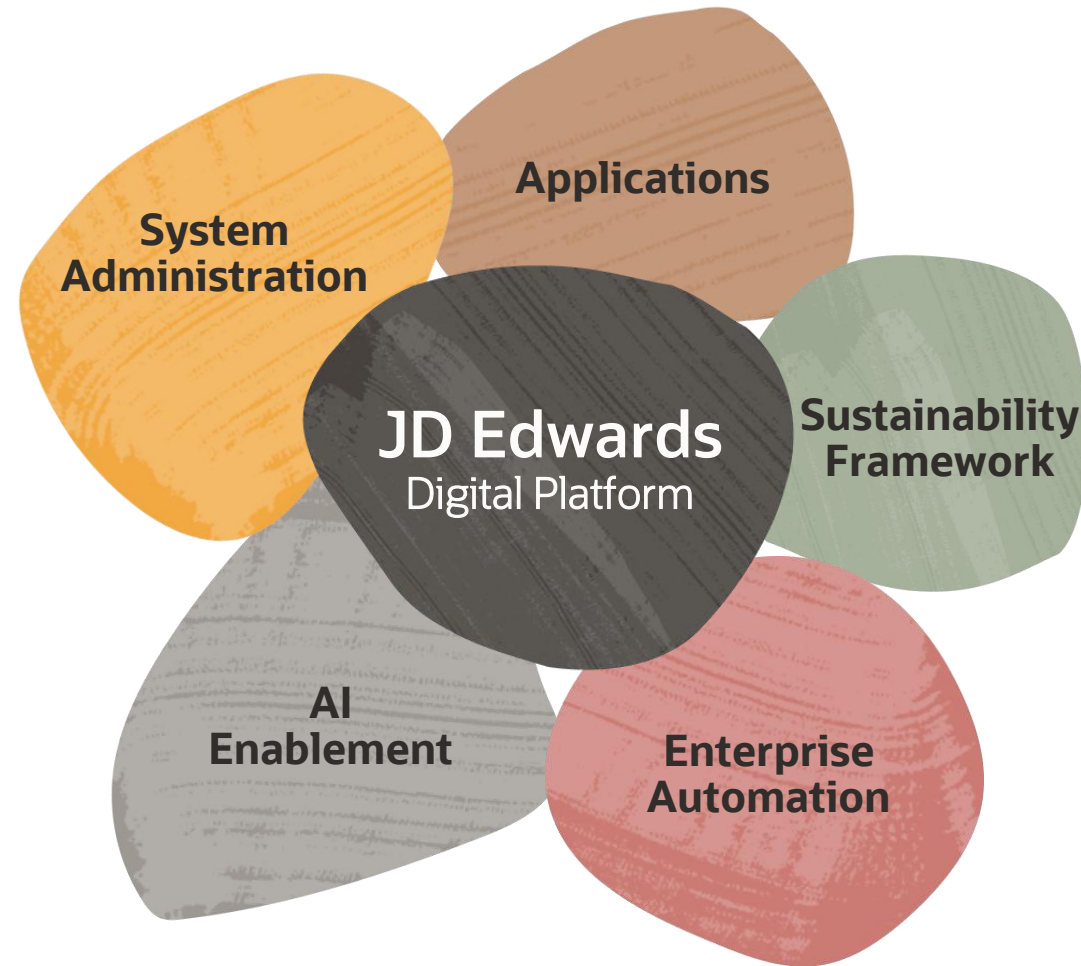


Last updated : 9/24/2024 10:35:55 



# JD Edwards Product Strategy

Creating, protecting, and harnessing your digital gold



# Release 25 – Automate, Optimize and Transform

## Release 24 November 2023

- EA: Requisition to Receipt
- EA: Shipment to Dispatch
- JD Edwards Statement of Direction for Sustainability Framework
- Standalone Price Check in Procurement
- Volume Based Buying Recommendations in Procurement
- Ability to View Details of Vouchers Associated with Purchase Orders from Account Ledger Program
- Improved Asset Cost Analysis
- Automated Safety Stock Population
- Allow Inventory Locations to be Put on Hold
- Usability Enhancements for Resource Assignments
- Blend Lot/Track/Trace Auditing
- Avoid Opening Requisition Order When Purchase Order Line is Canceled during Receipt
- Flexibility in defining default document type for Journal Entry
- Workflow Monitor
- Task Tracking
- Notification Reminders
- Output Stream Access for Orchestrations
- User-Defined Delimiter for Orchestrator Output to CSV
- Prebuilt Workflow Data Structures
- Update Manager: Application Update Support via Web Client
- Update Manager: Batch Update via Web Client
- Update Manager: Impact Analysis Dashboard
- Update Manager: Webify UDC & Glossary Utility
- Server Manager: Centralized Configuration for Enterprise and Integration Servers
- Web OMW: Business View Design Tool
- Web OMW: Object Promote to Package
- Simplified Management of User Logging

## Release 24 January/May/June 2024

- Financials Year End 2023
- US, Canada Payroll Year End 2023
- Order Preparation Day and Delivery Date Preference Based on Workday Calendar
- Weigh Tags Processing Usability Enhancement
- Sales VAT File to Peru Tax Authority
- Enterprise Automation: Order to Cash
- Enterprise Automation for Procurement: Analyze Metrics
- Production Lot/Serial Number and Location Automation
- Brazil – Support for PIX Payment Format
- Ability to Update Subledger with Building Number During G/L Post for Recurring Billing
- Display Reason Code for Voided Transactions in Tenant Ledger Inquiry Program for Manual Billing
- Return Connector Response as a Variable
- Ascending or Descending Thresholds on Watchlists
- Allow Reordering of Data Request and Grid Request Data Outputs
- Reorder Orchestration Inputs
- My Workflow Monitor
- Authentication for OCI Services
- Orchestrator Variable for Report Queue
- View PDF Attachments with a Single Click
- View Attachments in Composite Application Framework
- Update Manager: UDO Deployment
- Server Manager: Enterprise Server Component Change Retain External Files
- Server Manager – R24 Additional APIs
- User Access and Application Usage Tracking
- Improved Automatic Serialized Object Generation

## Release 25 Oct. 2024/January/April/June 2025

- EA: Procure to Pay Process Model with Connected Processes
- EA: Production Order to Cost Update (E1 Page)
- EA: Order to Cash with Warehouse Process Model Template
- EA: Process Definition Application
- Sustainability Foundation and Stationary & Mobile Combustion (Scope 1)
- Capture and Store Purchased Energy (Scope 2)
- Ability to Assign Delinquency Fees to Business Unit of Invoice
- Increased Range of Account IDs
- Two-Way Voucher Match Automation
- License Plate Workbench Usability Enhancements
- Ability to Edit Tax Information in Manual Billing Program
- Enable Maintenance and Service Work Order Ledger
- Auto Retrieval of Next Check Number in Payroll
- Enhanced Data Access Driver for Multiple Environments
- Optimized Full Package Build Performance
- Server Manager – Performance Workbench
- Package Deployment Through Orchestration
- Improved performance with TCP Fast Open on Oracle Autonomous Database Serverless
- JDE Update Manager: Change Assistant Force Merge Option
- Automatic Negotiation of TLS version for secure communication
- Enterprise Process Modeler
- EnterpriseOne Widgets
- EnterpriseOne Pages: Widget Pane'
- Switch Statement in Logic Extensions
- Comparative Criteria on Form Requests, Data Requests, Data Service, and Logic Extensions
- Rich Formatting of Workflow Messages
- My Tasks





ORACLE

JD Edwards EnterpriseOne 9.2

# Release 25

*Automate. Optimize. Transform.*

PLANNED

ORACLE

JD Edwards EnterpriseOne 9.2

# Release 26

*Automate. Optimize. Transform.*

**Applications Update 26**  
**Tools Release 9.2.26.x**



# Announcing JD Edwards EnterpriseOne **Release 25**

**June 2025**

[Learn More](#)

Some key innovation delivered with Release 25 includes intuitive user interfaces, configuration to eliminate the need for customizations, automation that eliminates manual steps, optimization for continuous adoption, and solutions that enable you to maintain compliance with regulatory and platform requirements.

## Register for **INFOCUS**

**September 9 - September 11, 2025**

**Denver, CO**

Join us for the #1 JDE event of the year

## Premier Support for EnterpriseOne Extended through at least **2036!**

[Learn More](#)



Roadmap



Announcements



Product Catalog



JDE and SaaS



JDE Documentation

**New in JDE**

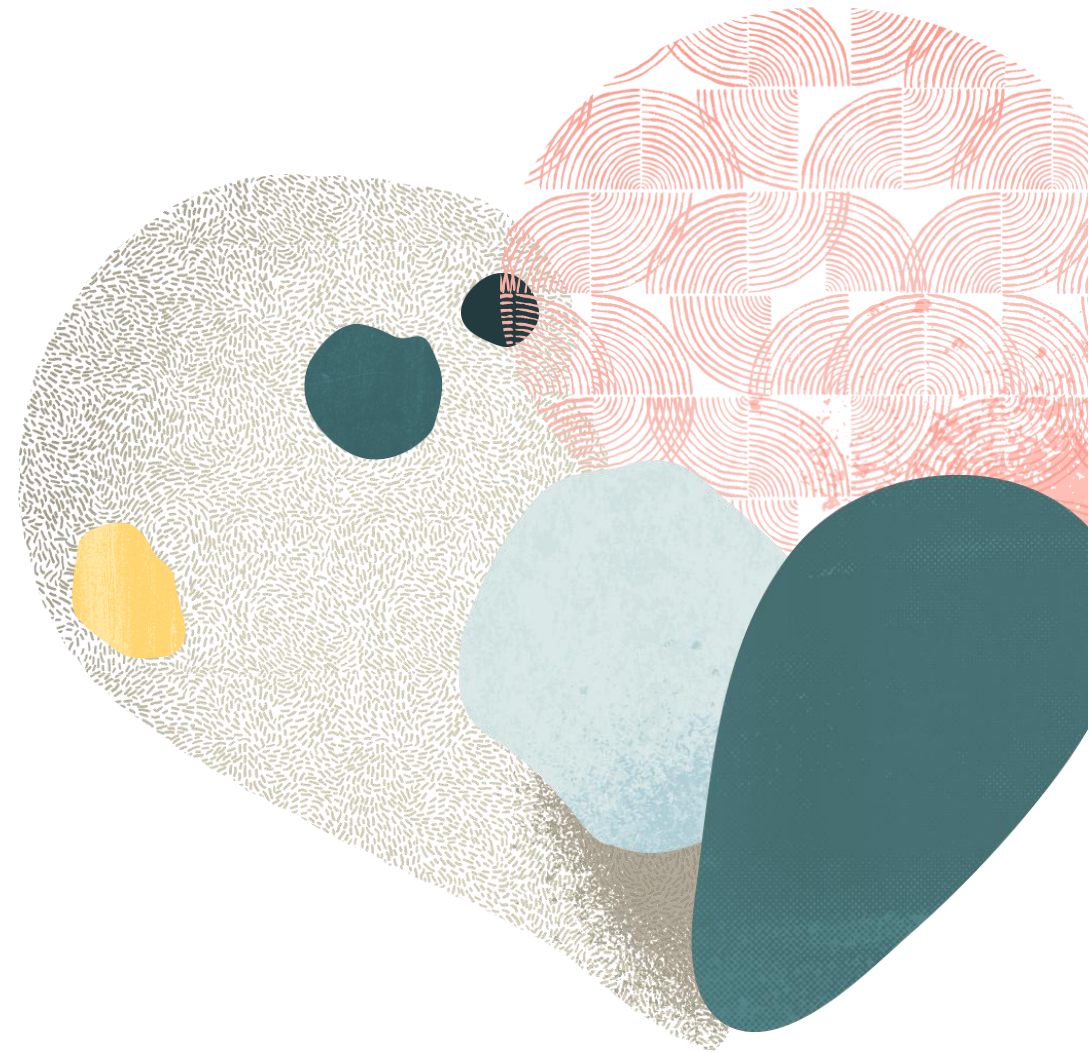
**User Experience**

**Digital Transformation**

**Simplify and Automate**

Together, we will relentlessly  
**improve** and **innovate**.

Together, we will **optimize**  
and **transform** how you use  
**Oracle** applications and  
technologies.



**#JDERocks**

